



Sculptors
Queensland

presents

NORTHSHORE SCULPTURE BY THE RIVER 2022



INDOOR
MAY 6 - 24

OUTDOOR
MAY 13 TO JULY 10

[#sculpturebytheriver2022](https://www.instagram.com/sculpturebytheriver2022)

Eat Street
NORTHSHORE

Alceon 

SIRROMET

hamilton reach
Live different.

Sculptors Queensland would like to respectfully acknowledge the Traditional Owners, Custodians, Ancestors, Elders and Families of our First Nations People.



Jo Bullock-Saxton,
President

Welcome

I would like to acknowledge the First Nations people as the Traditional Owners of the land on which this meeting is taking place. I recognise the country north and south of the Brisbane River, as the home of both the Turrbul and Jagera nations. I pay deep respects to all Elders past, present and future.

The Society of Sculptors Queensland is delighted to be able to respond to the call for an exhibition in this emerging Precinct with such diverse history. This Northshore Exhibition, and all the groups involved in its creation and realisation, have created Community in this place. Community develops with quality relationships and is where possibility, generosity, and gifts abound. It is where a sense of place, common interests, perspectives, joint action, social ties, diversity and multiplicity flourish. This exhibition initially was facilitated in 2020 by Economic Development Queensland with a long perspective, with a desire to start this Community tradition as an ongoing event. We are delighted to have been included in this venture again and create community spaces from diverse perspectives through our talented artists. We seek to attract people to this area, enliven this space with the expression and consciousness of art works, highlight this part of the Rivers reaches, and demonstrate how Art and New Emerging Communities can work together.

A special acknowledgment to all our Sponsors.

Alceon
Fraser's Property Group
Eat Street
and our long term sponsor - Sirromet Wines

Enjoy this 2022 exhibition.

Jo Bullock-Saxton (President)
and Ollie Hardt (Exhibitions Coordinator)

Sculptors Queensland would like to extend a very special thanks and gratitude to our wonderful sponsors for helping make this event possible.



INDOOR EXHIBITION @ THE SHED

INDOOR



MAY 6 - 24 | WEDNESDAY, FRIDAY, SATURDAY AND SUNDAY 10AM - 4PM
MONDAY, TUESDAY AND THURSDAY BY APPOINTMENT ONLY
CONTACT: exhibitions@sculptorsqld.org.au

OUTDOOR EXHIBITION @ MARITIME GREEN

OUTDOOR



MAY 13 TO JULY 10 | MONDAY TO FRIDAY 9AM - 5PM
SATURDAY AND SUNDAY 10AM - 4PM



IS-01
WAVERUNNER

Donald Harrison

The Dolphin is playing in the surf diving from a breaking wave with the second crest forming behind. In the base, the turbulence formed from the previous breaking wave is depicted. This sculpture radiates life, action and happiness with lots of warm flowing lines

60w x 30D x 20H (cm)

Wood

\$3,100



IS-02
ALADDIN'S WINGS

Donald Harvison

Aladdin's Lamp lights the entrance to his mystical cave while rising smoke from the lamp blends into the graceful form of a swift in flight.

30w x 30D x 40H (cm)

Wood

\$4,500



IS-03
THOTH WITH SCROLL 2022BC STYLE

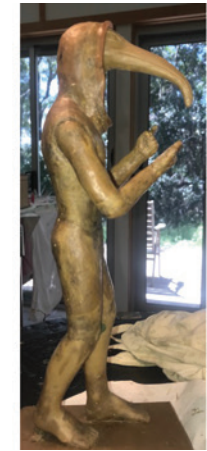
Lynette Cooney

This sculpture was carved in wax and cast using the lost wax method at Chalkos Foundry, in traditional ancient Egyptian art style. Working on the piece is a fine, meditative experience. It has a stillness of time, the energy of the past and timeless archetypal message in the mythology and image. Thoth was a moon God and later was associated with writing and knowledge. This sculpture carries a scroll in his right hand, stepping forward with his left leg and wears a magical feather and Uraeus crown. Attached photo is of the wax sent to the foundry for casting.

10w x 14D x 43H (cm)

Bronze with patina

\$2,200



IS-04
IBIS MAN WITH IPHONE 2022

Lynette Cooney

This sculpture was inspired by ancient Egyptian art, modern technology, popular dress and the quest for communication, truth, wisdom and knowledge. The juxtaposition of this 2022 piece with the traditional 2022BC style piece, also presented for inclusion in the exhibition, may be of interest. One observation is the replacement of the scroll with the iPhone. Advanced technology connecting people today. People driven by the same quest for knowledge over thousands of years. The attached photo is of the carved wax figure which is currently at Chalkos Foundry for casting.

8.5w x 13D x 30H (cm)

Bronze with patina

\$2,200



IS-05
BIRDS OF A FEATHER

Ros Haydon

Those with similar interests and beliefs come together to find support, confidence and validation. Best activity is to watch flocks of birds as they gather in hordes at sunset chattering, and flitting between branches.

36w x 6d x 37h (cm)
Brazilian Cherry-Wood, Kwila

\$300



IS-06
THE EARLY BIRD DOES NOT ALWAYS GET THE WORM.

Ros Haydon

Look around. Size up the terrain. Startups and new ideas don't always reap the benefits, or financial rewards of enterprises as often it is the ones who come after that that have the advantage.

8w x 12d x 18h (cm)
Bronze

\$400



IS-07
WINDBOURNE

The Artist Trebor

Leaning forward and standing strong to counter the wind's mischief that is trying to push me back and have me fall, I stand majestically with arms outstretched like the wings of the mighty condor. The crisp chilled stream of air rushes past my body, exiting behind me in a turbulent flurry of silken sleeves, jacket tails and angel hair. I close my eyes. I feel light on my feet, giving me the sensation of being airborne, floating effortlessly on the breeze. Exhilarating. Free. Unhindered.

I believe I was truly flying.

38.5w x 30d x 38.5h (cm)
Brass

\$750

 #the_artist_trebor

 @theartisttrebor



IS-08
ACOUSTIC ALLURE

The Artist Trebor

The alluring sounds of the classical guitar have, for centuries, been heard to serenade and win the hearts of lovers and suitors, in countries and cultures, many and varied. Said to be based on the curves of the female torso, the body of the classical guitar has evolved into the form we are so familiar with today. It is classical in both form and function. This baroque-style representation evokes a sense of quintessential musical seduction.

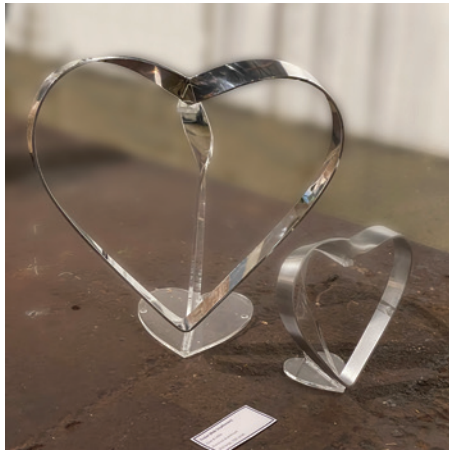
Alluring. Tempting. Sensual. Sexy. Poetic. Emotive. Romantic. Beautiful.

45w x 35d x 180h (cm)
Found Objects

\$1,650

 #the_artist_trebor

 @theartisttrebor





IS-09
LOVE ETERNAL LOVE

The Artist Trebor

When two different worlds come together, be they people or cultures, if they each agree to bend and twist ever so slightly, that will allow them both to become one, joining together in an endless flow of gratitude, togetherness, life and love. Expressed here as a Mobius Strip, a sculptural form that has only one surface and only one edge, which loop around on themselves infinitely. Eternally.

30w x 5d x 30H (cm)
Brushed or Polished Aluminium

Small \$250 - Large \$450

 #the_artist_trebor
 @theartisttrebor



IS-10
SURF'S UP

Jane Prasser

Go ride a wave

14w x 20d x 53H (cm)
Bronze

\$2,500



IS-11
ALL EARS

Catherine Anderson

This pup has all his attention on the world, unwilling to miss a single thing.

25w x 10d x 15H (cm)
Bronze

\$2,400



IS-12
INTO THE BLUE (A SCULPTURE IN 2 PARTS)

Mela Cooke

So very Australian, diving into and being immersed in, the cool blue water.

(1) 33W (2) 40 cmw x (1) 26 (2) 27cmD x (1) 70 (2) 70H (cm)
Bronze

\$7900 each, \$15,200 pair



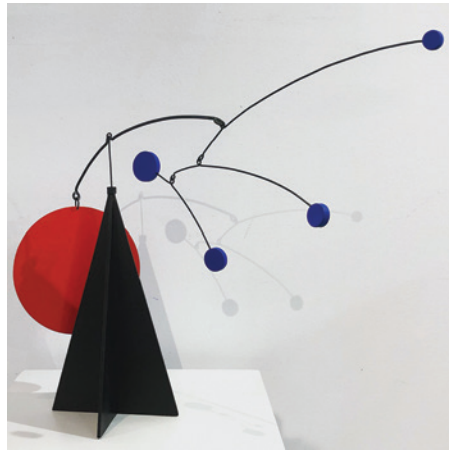
IS-13
INTO THE WILD

Mela Cooke

That heady feeling of stepping into the unknown!

25w x 40D x 48H (cm)
Bronze with a steel base

\$5,250



IS-14
BIG RED LITTLE

Russell Solomon

Mobiles are a reminder of the connectivity between us, the space we share, time and the universe. Mobiles redefine the spaces they occupy, giving us an opportunity to ponder our place in the world.

50w x 50D x 90H (cm)
Steel wire and wood

\$360



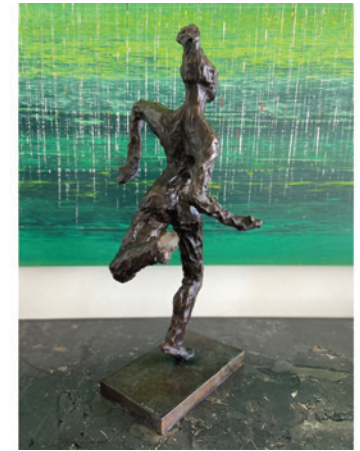
IS-15
MAGPIE MAGIC

Russell Solomon

Over the past few years our communing with nature has been recognised for its value to our mental and physical wellbeing. It's often we forget that we are nature and nature is all around us. When we interact with the Magpies in our neighbourhoods, they are acutely aware that we are nature in their world as much as they are nature in our world.

30w x 30D x 40H (cm)
Aluminium wire black and acrylic paint white

\$300



IS-16
TIP TOE

Raeann Shields

Concept: This piece was created as suitable for both indoors and outdoors. It depicts A Wood nymph tip toeing through the garden in a light, carefree and musical way. The joyful, bouncy manner of stepping through our landscape where she is at home and most happy can be seen in her posturing and dynamic movement.

30w x 35D x 70H (cm)
Bronze

\$5,600



IS-17
TAKE A SEAT

Raeann Shields

Concept The aim here was to create a feeling of realism and flow within a solid form. The clay depicts the draping of fabric over a chair with the ultimate invitation to 'Take a Seat'

50w x 62D x 36H (cm)

Clay

\$400



IS-18
SPIRIT GIRL

Ian Manley

She is the embodiment of the Chilean Myrtle tree found from within.

23w x 25D x 39H (cm)

Wood

\$400



IS-19
COMPANIONS

Caroline Moss

Most of my art is whimsical leaning on the abstract what ever takes my fancy at the time

15w x 10D x 50H (cm)

Concrete, mixed media concrete

\$420



IS-20
TOUCH THE EARTH

Janna Pameijer

Touch the Earth' is my response to observations of children as they respond to the world around them, discovering, contemplating and experiencing. As adults we still have the capacity to see and enjoy (as a child) the simple things of life. Sculpture is another way for me to connect to the world around me. Observing people that inhabit my environment encourages me to reach out and be with them through the process of modelling them.

Sculpture allows the viewer to join me on that journey of discovery.

40w x 40D x 52H (cm)

Bronze 1/20

\$15,000



IS-21
WHISPERS

Janna Pameijer

Observing children has been my fascination since my own children arrived. These two sit and discuss the important things like her foot. It's another world, one we can only stand back, watch and enjoy.

33w x 35D x 450H (cm)

Bronze

\$24,000



IS-22
GEOMETRIC

Craig Fynmore

14w x 30D x 65H (cm)

Timber

\$550



IS-23
TWISTED

Caroline Moss

Most of my art is whimsical leaning on the abstract what ever takes my fancy at the time

12w x 12D x 55H (cm)

\$320



IS-24
SETTER

Ekaterina Strounina

A beloved Irish setter playing with his ball

8w x 22D x 13H (cm)

Bronze

\$1,300



IS-25
HUNTING DOG

Ekaterina Strounina

A Pharaoh hound hunting on the rocks, edition 1/6

10W x 22D x 15H (cm)

Bronze

\$1,500



IS-26
LORIKEETS

Ian Manley

Mother and fledgling

30W x 30D x 50H (cm)

Wood

\$300



IS-27
WAVESTONE

Gabe Parker

Wavestone frames the struggle between extreme opposites. Water may not appear to move stone in one of our lifetimes, but we instinctively know that over many lifetimes water will eventually shape the stone. And always in ways nobody can predict.

70W x 25D x 60H (cm)

Steel

\$1,200



IS-28
THE VACATION

Gabe Parker

The Vacation interprets the journey we take as we travel away from our urban dwellings searching for the heights of mental freedom and a lightness that only a vacation can give us. Start at the base where the vehicle is apparent and travel up through the gates of industry. Follow the path upwards along the highways of the mind where things will converge in an oasis that is the state of vacation.

30W x 30D x 180H (cm)

Steel

\$1,200



IS-29
FREE RANGE I

Claudje Lecompte

"Free Range I" is part of a series which continues an exploration of forms and the technique of knotless netting or looping; current form of interest is the universal 'egg'.

25w x 25d x 35h (cm)

Wire and Banana fibre Looping

\$500



IS-30
HOLDING IT TOGETHER

Claudje Lecompte

"Holding it Together" is part of a series which continues an exploration of forms and the technique of knotless netting or looping; current form of interest is the universal 'egg'.

22w x 22d x 30h (cm)

Primitive-fired ceramic and banana fibre Looping

\$500



IS-31
OPTIC NERVE

Gary Fenlon

This is a sculpture of the left human eye.

45w x 30d x 45h (cm)

Marble on travertine mount

\$2,500



IS-32
MOMENTS

Susanna Doyle

This piece is about taking a quiet moment, in a busy schedule, and just being.

22w x 16d x 19h (cm)

Porcelain clay

\$450



IS-33
MERMAID MONEY

Colleen Lavender
The butterfly effect

10W x 10D x 10H (cm)
Steel / brass / copper

\$200 each



IS-34
EVOLVING

Hermann Schraut
I usually start with the first impression of a piece of Wood front of me and it can Month to the final Form and finishes

85w x 45D x 72H (cm)
Wood and cooper gilding

\$1,900



IS-35
WAAR-RAR BRISBANE RIVER SPIRIT

Hermann Schraut
This Piece is a Nature creation over many 100 years it was washed up in the 2011 flood in a muddy grey crusted Contrition after cleaning carved out to give it a more muscular Form

85w x 45D x 145H (cm)
Tree root Ironbark

\$2,200



IS-36
METHAMORPHOSOS

Hermann Schraut
It is all there before I start, I just help it to reveal itself

45w x 40D x 125H (cm)
Wood

\$1,450



IS-37
SAFETY FIRST

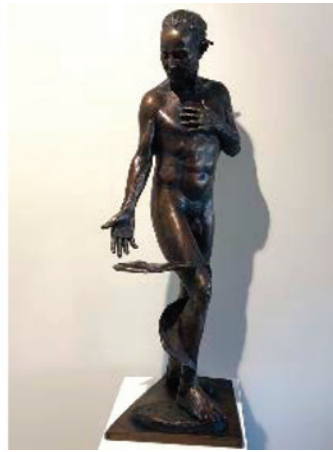
Willem Scheepers

Travel safely and travel smart, go on grand adventures and explore the world as often as possible.

30w x 30d x 60h (cm)

Found Objects

\$200 each



IS-38
NEXUS

Cam Crossley

Edition 1 of 6.

As humans, individually and collectively we are inseparable from the natural world. Ofttimes forgotten, this is powerfully remembered when we find ourselves in nature – the ocean, the beach or the bush and free our thoughts to feel the connection.

'Nexus' in particular evokes that feeling of returning we experience as we wade back into the ocean and feel its pull.

31w x 34d x 78h (cm)

Cast Bronze with Florentine Brown Patina

\$11,000



IS-39
INTUITION

Cam Crossley

Intuition, is that you?
I hear you reading
From the diary of my days,
Your voice muffled by life's din.
My ever-faithful guide,
I know you are there, gently
The compass of my own heart.

21w x 38d x 35h (cm)

Cast Bronze, No base, Ferric Nitrate Brown Patina

\$5,250



IS-40
THE SEEKER

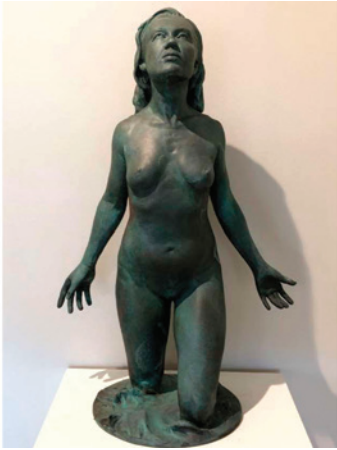
Cam Crossley

Historically in art, both in painting and sculpture the female figure is often shown beset or assailed by life, or struggling before some force, seen or unseen. Alternatively, she may be restful or contemplative in a pose suggestive of a delicate, reserved even fragile femininity. There is so much strength in the feminine that rises to life's challenges, that seeks, finds and endures. These ideas for the genesis of the sculptural pair of 'The Seeker' and 'The Seeker Finds'.

27w x 16d x 29h (cm)

Cast Bronze with Ferric Nitrate Patina on Australian Red Cedar Base

\$3,250



IS-41
VENUS OF ALEXANDRIA BAY

Cam Crossley

That day, The yin and yang of sea and sky breathed together exhaling lilac, blue and turquoise onto the sand of Alexandria Bay and its peaceful, empty arc of heat.

The gentle waves of memory return to me reset with meaning. That day when we swam, we were just creatures of that beautiful sea. Beauty was everywhere and close. Such women made the man, within life's current, quietly. Now from life's distance, warm flesh becomes cold metal the blue sea - frozen in memory.

Cast Bronze Figure & Base with
Cupric Nitrate Patina

\$4,750



IS-42
THE JOURNEY

Dean Rusling

75w x 40D x 38H (cm)
Cast Bronze

\$10,000



IS-43
SWIMMING IN THE CURRENT

Dean Rusling

74w x 55D x 43H (cm)
Cast Bronze

\$10,000



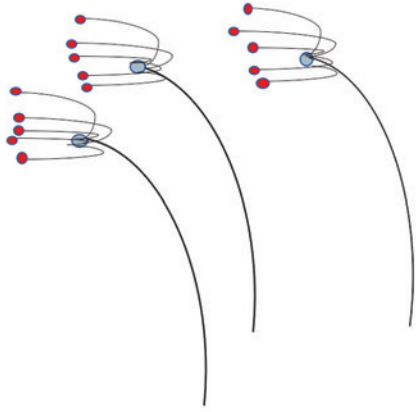
IS-44
BEAUTY AND THE BEAST

Ollie Hardt

'Beauty and the beast' part of the stiletto series of sculptures, the stiletto becomes the vessel of a theme and in this case one of whom is regarded as much more attractive than the other.

27w x 13D x 58H (cm)
Boogeroo timber, Brass and copper

\$1,800



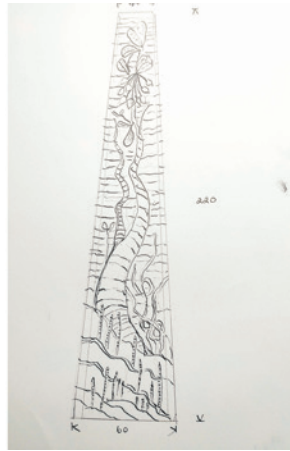
OS-01
CORAL POLYPS

Frederick Beel

The artist wishes to acknowledge the harm being done to our coral reefs from climate change and silt run off etc. Coral polyps are very delicate and fine sea creatures that are sensitive to changes in our oceans. My piece is an effort to show their fragility and lightness, which is all at risk.

100W x 100D x 300H (cm)
Stainless steel and timber

\$2,300



OS-02
DRAWN TO LIFE

Carmel Marsden

"Drawn to Life" was inspired by the organic shapes and natural forms of the mangroves especially the mature mangrove tree and its sheltering canopy, the flowers, seeds and how they have adapted to the inter tidal conditions releasing salt through the leaves and developing roots that grow upwards to obtain oxygen in the muddy waterlogged environment. All form part of the interface between the land, the ocean and the atmosphere

60W x 40D x 220H (cm)
Concrete and Steel

\$2,750



OS-03
WINDBOURNE

The Artist Trebor

Leaning forward and standing strong to counter the wind's mischief that is trying to push me back and have me fall, I stand majestically with arms outstretched like the wings of the mighty condor. The crisp chilled stream of air rushes past my body, exiting behind me in a turbulent flurry of silken sleeves, jacket tails and angel hair. I close my eyes. I feel light on my feet, giving me the sensation of being airborne, floating effortlessly on the breeze. Exhilarating. Free. Unhindered.

I believe I was truly flying.

120W x 45D x 130H (cm)
Powder-Coated Aluminium

\$2,500



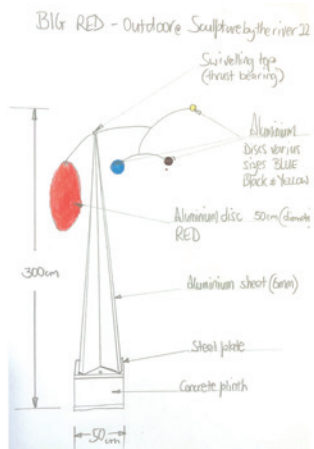
OS-04
"WHERE TO NOW?"

Catherine Anderson

Nature is constantly changing, often of its own accord, sometimes due to man's interference. These swimming fish show evidence of change, perhaps odd, perhaps beautiful - but the changes makes us wonder what lies ahead for nature and for us. Where to now?

150W x 25D x 120H (cm)
Bronze, marine grade stainless steel

\$6,500



**OS-05
BIG RED**

Russell Solomon

'BIG RED' is a freestanding mobile. It's colours reference bouys and beacons in the nearby river and around the world. Mobiles give us the opportunity ponder the spaces we rarely give thought to, our awareness of the connectivity all space and time is enhanced by the mobile.

50w x 50d x 300H (cm)
Aluminium wire, sheet and steel.

\$900

**OS-06
EMERGENCE#1**

John Ryall

Emergence is the reality the mind perceives from the from the input of the sensors.

250w x 50d x 210H (cm)
Epoxy coated hardWood

\$6,800

**OS-07
AVES**

Gabe Parker

AVES Speaks to bird-life of our local forests and river systems. It embraces the forms of low scrub dwellers who are scaled down to match their microcosm but also the birds of prey alone in the ruffled tree tops, strong wise and all seeing.

125w x 110d x 200H (cm)
CORTEN Steel

\$9,000

**OS-08
THRUST**

Gabe Parker

THRUST creates a conversation between the rawness of it's construction and elements of the natural world. The shifting sunlight and the weathering effect on the steel forms a collaboration between colour and form using the sky as it's backdrop. Not unlike the rocky outcrops we see along the shores of the Brisbane River / Maiwar.

75w x 90d x 280H (cm)
CORTEN Steel

\$9,000



OS-09
FLOW

Antone Bruinsma

"Flow" represents the constant motion of a tidal river, shaping the world around it as moves back and forth. This action wears away yet polishes very hard materials in the process. We can also relate to this on a personal level, one where the waters of our emotions cuts through the layers of our being and refines us. And it relates to the movement of water shaping our environment and cities.

250W x 210D x 80H (cm)

Granite and sandstone

\$47,000



OS-10
LEAFY SEA DRAGON

Colleen Lavender

I'm discovering this technique, thinking about flow while forging, welding and plasma cutting.

1000W x 500D x 1400H (cm)

Steel

\$3,500



OS-11
RISE

Willem Scheepers

Rise is about Australians working and standings together to overcome adversity and challenges. A metaphorical tribute to true mate-ship and community coming together and rising above our challenges together, rebuilding our lives and creating something even better than what we started with.

90W x 90D x 90H (cm)

Charred Timber

\$450

Here's some space to make a few notes about you favourite sculptures and artists

NOTES:



Sculptors
Queensland

Who We Are

Sculptors Queensland is a not-for-profit organisation formed by a dedicated group of sculptors wanting to share their knowledge and to connect in a friendly supportive environment. This organisation has continued to promote sculpture as an important cultural and creative expression in three dimensional art form since 1969.

Sculptors Queensland celebrates 50 years in 2019. As well as looking forward and recognising memorable sculptures created by talented new sculptors, recording our culture and marking places of significance, we look back at the achievements of Queensland's past sculptors, who have forged the way.

Find out more by visiting our website www.sculptorsqld.org.au

Where We Meet


Our studio and meeting place, also known as "The Shed", is located behind the Old Museum at 480 Gregory Terrace, Fortitude Valley. It was always a place of activity, originally the animal specimen preparation area for displays and later the carpenters workshop before it became our "home".

CONTACT DETAILS FOR SCULPTORS QUEENSLAND

Stay in touch !!!

Latest news, events, opportunities, updates, membership
and as a member Promote your own work!

 www.sculptorsqld.org.au

 email: info@sculptorsqld.org.au

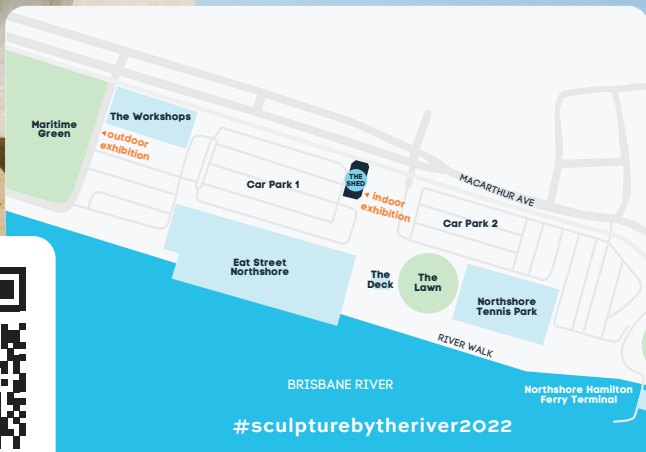
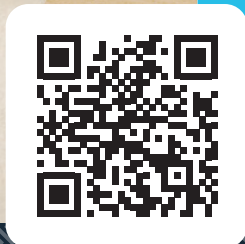
 facebook.com/sculptorsqld

 instagram.com/sculptors_qld/

NORTHSHORE SCULPTURE BY THE RIVER 2022



Sculptors
Queensland



Eat Street
NORTHSHORE

Alceon

SIRROMET

hamilton reach
Live different.